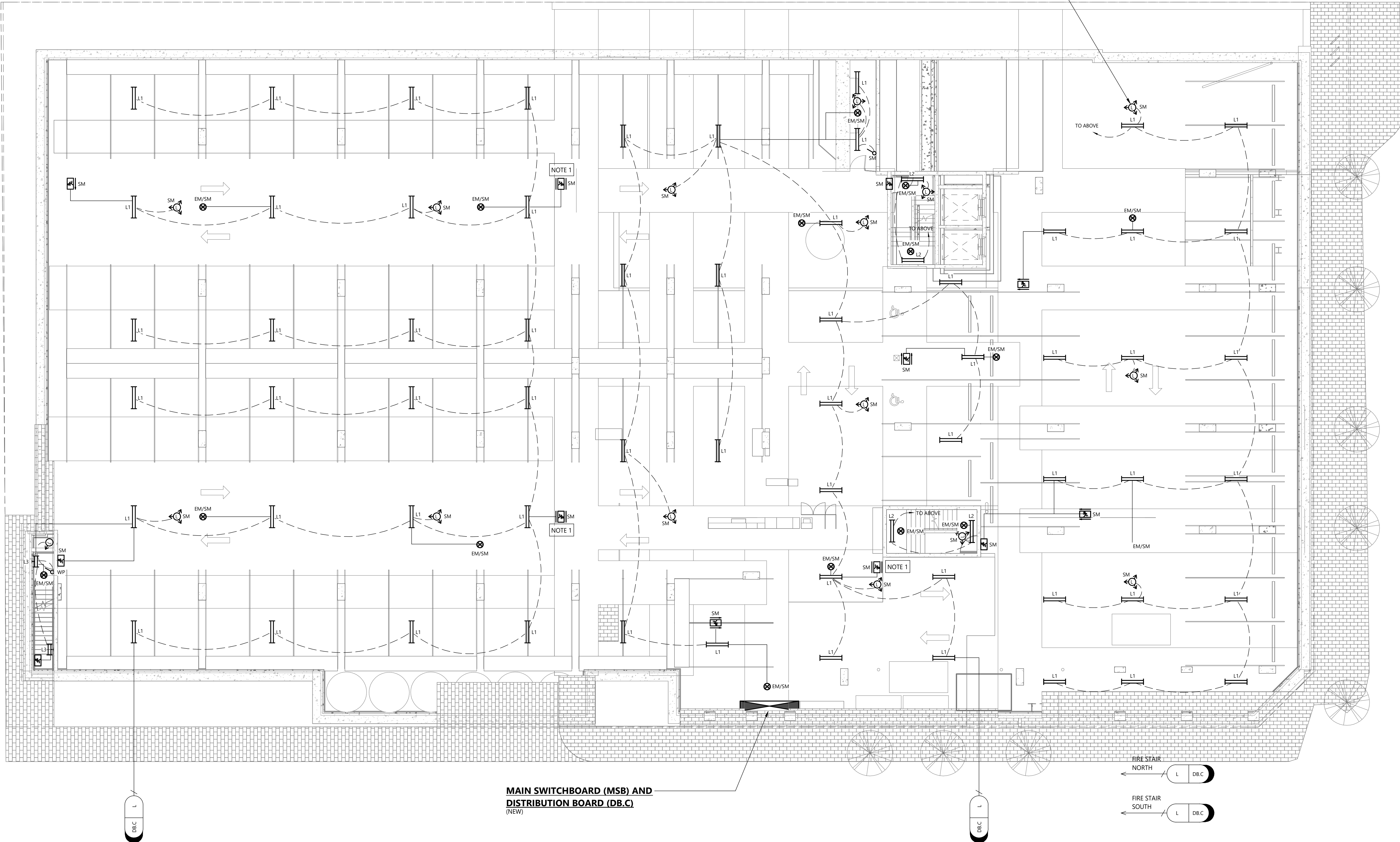


**NOTE:**  
1. EXIT SIGNAGE WITHIN BASEMENT TO INCLUDE  
DOUBLE SIDED DIRECTIONAL DECALS.

PROVIDE CONTACTOR CONTROL FOR  
MOTION SENSORS WITHIN CARPARK TO  
ACTIVATE ALL CARPARK LIGHTING ON  
ACTIVATION OF ONE MOTION SENSOR  
ON DIFFERENT CIRCUITS.



B	CONSTRUCTION ISSUE	24.03.20	MS	
A	CONSTRUCTION ISSUE	14.02.20	MS	
REV N	DESCRIPTION	DATE	CHKD	

© Copyright Lucid Consulting Australia 24/03/2020 2:51:47 PM

FOR CONSTRUCTION

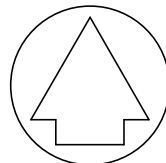
1 0.5 0 0.5 1 2 3 4 5 m

SCALEBAR 1:100



**LUCID**  
CONSULTING AUSTRALIA  
Level 3/169, Pirie St Adelaide SA 5000  
Phone: (08) 8407 9700  
Email: adelaide@lucidconsulting.com.au

PROJECT  
HYDE PARK PLACE  
248 UNLEY ROAD, HYDE PARK  
ELECTRICAL SERVICES  
DRAWING  
BASEMENT LUMINAIRE ARRANGEMENT



NOT FOR CONSTRUCTION PURPOSES UNLESS STAMPED FOR  
CONSTRUCTION. VERIFY DIMENSIONS AND LEVELS ON SITE  
BEFORE SETTING OUT. DO NOT SCALE. REFER TO FIGURED  
DIMENSIONS - IN mm UNLESS OTHERWISE STATED.

Scale	Design: MD	No. in Set	Date
1 : 100	Drawn: PY	13 of 24	FEB 2020
Orig. Size	Drawing no.	Revision	
A1	LCE14462-E208	B	